

## 测试报告

No. SH9039337/CHEM

Date: Mar. 16, 2009

Page 1 of 5

江西晨航灯头有限公司/浙江晨丰灯头有限公司  
江西省乐平市塔山工业园区/浙江省海宁市盐官工业园区

委托检验的样品及客户对样品的说明如下:

样品名称 : 铝合金灯头  
SGS 相关号 : 11666464-3  
主要成份 : 铝, 玻璃

样品收到日期 : 2009-03-12  
样品试验日期 : 2009-03-12 – 2009-03-16

试验要求 : 参照 RoHS 指令 2002/95/EC 及后续修正指令.

试验方法 : (1) 参照 IEC 62321:2008, 用 ICP 和 AAS 测定镉的含量  
(2) 参照 IEC 62321:2008, 用 ICP 和 AAS 测定铅的含量  
(3) 参照 IEC 62321:2008, 用 ICP 测定汞的含量  
(4) 参照 IEC 62321:2008, 采用点测试法/比色法测定六价格的含量

试验结果 : 见后续页

SGS-CSTC 化学实验室授权签字



郝金玉  
实验室经理

本报告是发布日期为 2009 年 03 月 16 日编号为 SH9039336/CHEM 英文检测报告的中文译本。如有异议, 以英文版本为准。

This document is issued by the Company under its General Conditions of Service printed overleaf or available on request and accessible at [http://www.sgs.com/terms\\_and\\_conditions.htm](http://www.sgs.com/terms_and_conditions.htm). Attention is drawn to the limitation of liability, indemnification and jurisdiction issues defined therein. Any holder of this document is advised that information contained hereon reflects only the findings at the time of its intervention only and within the limits of Client's instructions, if any. The Company's sole responsibility is to its Client and this document does not exonerate parties to a transaction from exercising all their rights and obligations under the transaction documents. Any unauthorized alteration, forgery or falsification of the content or appearance of this document is unlawful and offenders may be prosecuted to the fullest extent of the law. Unless otherwise stated the results shown in this test report refer only to the sample(s) tested. This document cannot be reproduced except in full, without prior approval of the Company.

化学方法的试验结果 (单位: mg/kg)

测试项目:	方法 (参见)	1	2	3	MDL	RoHS 限值
镉(Cd)	(1)	ND	ND	ND	2	100
铅(Pb)	(2)	8	69	17	2	1000
汞(Hg)	(3)	ND	ND	ND	2	1000
六价铬(Cr VI)	(4)	---	4	---	2	1000
点测试/沸水萃取法测六价铬(Cr VI)	(4)	Negative	---	Negative	#	-

测试部件外观描述:

1. 银色金属
2. 黑色玻璃
3. 金色金属片

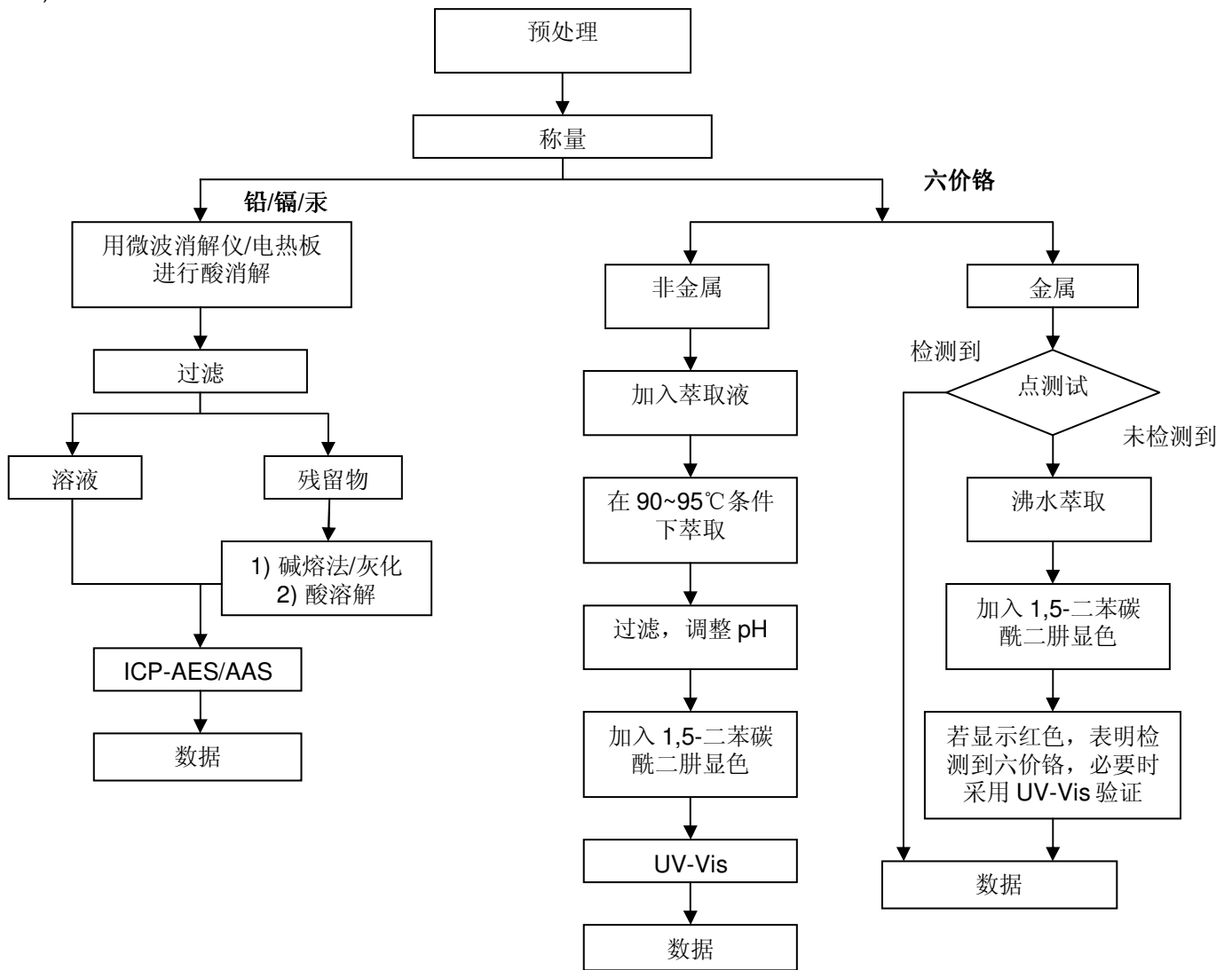
备注:

- (1) 毫克每千克=百万分之一(mg/kg=ppm)
- (2) ND =未检出
- (3) MDL =检测极限值
- (4) # = 点测试法:  
**Negative**= 镀层中未检测到六价铬, **Positive** = 镀层中检测到六价铬;  
 (当点测试结果为 **Negative** 或无法确定时,将采用沸水萃取法作进一步的结果验证。)  
 沸水萃取法:  
**Negative** = 镀层中未检测到六价铬  
**Positive** = 镀层中检测到六价铬;表明 50 cm<sup>2</sup> 表面积的被测试样品的沸水萃取液中六价铬的浓度等于或大于 0.02 mg/kg  
 针对金属表面的防腐涂层:由于未获知样品的存储条件和生产日期,样品的六价铬测试结果仅代表测试时样品含六价铬的状态
- (5) ##=根据欧洲法庭 2008 年 4 月 1 日的决议, 2005/717/EC 中关于聚合物样品中十溴二苯醚的豁免被否决。自 2008 年 7 月 1 日起,十溴二苯醚已被包含于多溴二苯醚的总和计算之中
- (6) 多溴二苯醚 = 多溴联苯醚
- (7) "-" = 未规定
- (8) "---" = 未检测
- (9) 最大允许极限值引用自 2002/95/EC RoHS 指令和后续修正指令 2005/618/EC。

This document is issued by the Company under its General Conditions of Service printed overleaf or available on request and accessible at [http://www.sgs.com/terms\\_and\\_conditions.htm](http://www.sgs.com/terms_and_conditions.htm). Attention is drawn to the limitation of liability, indemnification and jurisdiction issues defined therein. Any holder of this document is advised that information contained hereon reflects the Company's findings at the time of its intervention only and within the limits of Client's instructions, if any. The Company's sole responsibility is to its Client and this document does not exonerate parties to a transaction from exercising all their rights and obligations under the transaction documents. Any unauthorized alteration, forgery or falsification of the content or appearance of this document is unlawful and offenders may be prosecuted to the fullest extent of the law. Unless otherwise stated the results shown in this test report refer only to the sample(s) tested. This document cannot be reproduced except in full, without prior approval of the Company.

## 附件

- 1) 分析人员: 张春华/连超锋/方何裔
- 2) 项目负责人: 王卫

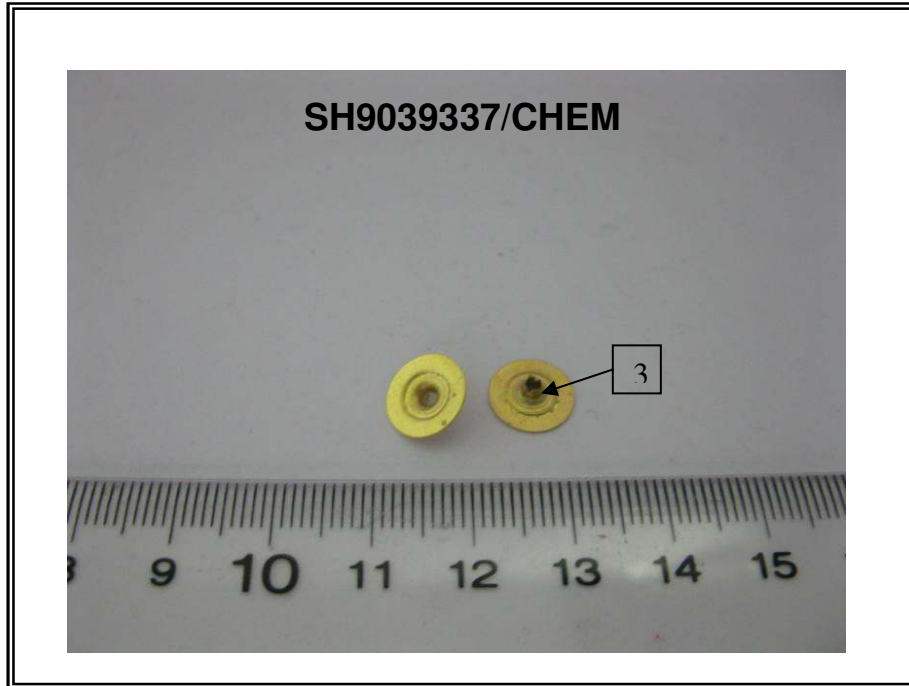


This document is issued by the Company under its General Conditions of Service printed overleaf or available on request and accessible at [http://www.sgs.com/terms\\_and\\_conditions.htm](http://www.sgs.com/terms_and_conditions.htm). Attention is drawn to the limitation of liability, indemnification and jurisdiction issues defined therein. Any holder of this document is advised that information contained hereon reflects only the findings at the time of its intervention only and within the limits of Client's instructions, if any. The Company's sole responsibility is to its Client and this document does not generate parties to a transaction from exercising all their rights and obligations under the transaction documents. Any unauthorized alteration, forgery or falsification of the content or appearance of this document is unlawful and offenders may be prosecuted to the fullest extent of the law. Unless otherwise stated the results shown in this test report refer only to the sample(s) tested. This document cannot be reproduced except in full, without prior approval of the Company.

样品照片:



This document is issued by the Company under its General Conditions of Service printed overleaf or available on request and accessible at [http://www.sgs.com/terms\\_and\\_conditions.htm](http://www.sgs.com/terms_and_conditions.htm). Attention is drawn to the limitation of liability, indemnification and jurisdiction issues defined therein. Any holder of this document is advised that information contained hereon reflects the Company's findings at the time of its intervention only and within the limits of Client's instructions, if any. The Company's sole responsibility is to its Client and this document does not operate parties to a transaction from exercising all their rights and obligations under the transaction documents. Any unauthorized alteration, forgery or falsification of the content or appearance of this document is unlawful and offenders may be prosecuted to the fullest extent of the law. Unless otherwise stated the results shown in this test report refer only to the sample(s) tested. This document cannot be reproduced except in full, without prior approval of the Company.



SGS 仅对原报告照片中的样品负责

\*\*\*报告结束\*\*\*

This document is issued by the Company under its General Conditions of Service printed overleaf or available on request and accessible at [http://www.sgs.com/terms\\_and\\_conditions.htm](http://www.sgs.com/terms_and_conditions.htm). Attention is drawn to the limitation of liability, indemnification and jurisdiction issues defined therein. Any holder of this document is advised that information contained hereon reflects the Company's findings at the time of its intervention only and within the limits of Client's instructions, if any. The Company's sole responsibility is to its Client and this document does not exonerate parties to a transaction from exercising all their rights and obligations under the transaction documents. Any unauthorized alteration, forgery or falsification of the content or appearance of this document is unlawful and offenders may be prosecuted to the fullest extent of the law. Unless otherwise stated the results shown in this test report refer only to the sample(s) tested. This document cannot be reproduced except in full, without prior approval of the Company.